

# NINETY NORTH MAIN

## WATER CONSERVATION SCHEDULE

### INSIDE THIS ISSUE:

<i>July 4th Contact Info</i>	2
<i>Tooele Arts Festival</i>	2
<i>Summer Camps</i>	3
<i>Clubhouse Cafe</i>	3
<i>Youth Golf</i>	3
<i>Railroad Museum</i>	4
<i>City Happenings</i>	4

Tooele City is implementing a water schedule for outdoor water use for all local residences, businesses, schools, and government agencies using culinary water. In the water conservation schedule, the City is divided into three sections and watering is allowed twice weekly. (See adjacent table.)

**Area #1** All water users North of Vine and West of Main water Wednesdays and Saturdays.

**Area #2** All water users North of Vine and East of Main water Tuesdays and Fridays.

**Area #3** All water users South of Vine water Mondays and Thursdays.

**Outdoor watering is not permitted on Sundays.**

The City encourages residents not to water during the hottest hours of the day, typically between 10 a.m. and 6 p.m.

This conserves water and reduces the amount of

water bills.

If there are special circumstances that require a modified schedule for residents or businesses—such as newly planted sod or lawn, contact Tooele City at 843-2150.

City parks and schools have been placed on a modified schedule because of the size of their lawn areas. While some parks and schools may be watering more than two days each week, a specific area of that park is only watered twice during the week.

### Water Wise Tips

**Irrigate By Zone** –Lawn, trees, shrubs and flowerbeds all have different watering requirements. Separate your landscaping into different irrigation zones, then water accordingly.

**Hand Water Dry Spots**—If you have a dry spot on your lawn, water it by hand to avoid over watering the remainder of the lawn.

2006 Watering Schedule		
<b>#1</b> North of Vine, West of Main <b>Wednesday and Saturday</b>	M a i n	<b>#2</b> North of Vine, East of Main <b>Tuesday and Friday</b>
Vine Street		
<b>#3</b> South of Vine <b>Monday and Thursday</b>		

### Repair Your Sprinklers-

Check all your sprinkler heads and hoses for leaks or winter damage. Adjust sprinkler heights and angles to increase water efficiency.

**Use Your Broom**– Sweep sidewalks, driveways and other paved areas with a broom instead of using the hose.

“We are asking our citizens to please cooperate with this schedule. It will allow the tanks to fill during off hours. We all need to conserve this precious resource,” Mayor Patrick Dunlavy says.

## CITY TO INSTALL DUAL CHECK VALVE DEVICES

In accordance with Federal & State law, Tooele City is installing dual check valve devices on meter sets. Tooele City will install the devices this summer and continue until all meters have one. The dual check valve device prevents possible backflow or back siphonage into the distribution system and helps to maintain safer, cleaner water for all

citizens. Pressure build up may occur due to thermal expansion. Elevated pressure may cause problems in your plumbing. Therefore you may need to install a thermal expansion device in your home. See your local plumbing retailer for other ideas that may prevent problems. Newer homes

may already be equipped with a thermal expansion device. Contact your builder/contractor to see if one is already in place. It is the responsibility of each homeowner to make sure your home is protected. If you have further questions or concerns, call the community development department at 843-2137.

## 4TH OF JULY CONTACT INFO

*Congratulations to Julie Rydahl! She is the winner of the 4th of July Theme Contest. The theme for 2006 is "Soaring on the Wings of Freedom."*

*If you are interested in making a float or would like to be in the 4th of July parade, please contact Parks & Rec, 843-2143, for the appropriate entry form, entry number and a complete list of parade entry rules. You can also visit our website for more information at [tooelecitey.org/city-departments/parks/4th-of-july-parade-rules](http://tooelecitey.org/city-departments/parks/4th-of-july-parade-rules).*

Plans are under way for the 4th of July celebration! Please contact the following individuals for information about the listed events:



\*Parade: Parks & Rec 843-2140

\*Park Activities/Booths: Kathy Harris 843-2140

\*Entertainment: Susan Trujillo 882-5496

\*Rodeo: Jim Harrell 882-2463

\*5K Run: Karen Perry 830-7846

\*Chamber Breakfast: Cindy Kirk 882-0690

We encourage families, businesses, church groups, etc., to build floats and enter them in the parade.

All motorized parade entries must have 2 people on foot located at the

front side of the entry to walk along the parade route for safety to spectators.

**New this year:** if you choose to throw candy or any other item, you must have individuals walk along the side of your parade entry and throw from there. We will no longer allow items to be thrown from floats, vehicles, horses, bikes, etc.

Thank you for your talents and efforts that will make this year's parade a huge success!

# Tooele Arts Festival 2006



• **June 23 - 25:** Booths open at 10 a.m.

• **Location:** Tooele City Park (200 West & Vine Streets).

• **Visual Arts:** Over 80 artists from throughout the United States.

• **Food:** Over 20 Food booths. Sample some of the best cuisine.

• **Entertainment:** Offering a huge variety of music this year including: *Carmen Rasmussen, Hard Days Night, Desert Road, Eric Dodge, Salt Lake Scots, Hungry Four, Kap Bros. Band, Mid-Life Crisis, and Salsa Brava!*

• **Children's Art Yard:** Showcasing exciting local youth talent.

## 21 Years of Great Art

# TOOELE CITY YOUTH SERVICES SUMMER CRAZE DAY CAMPS

Tooele City Youth services and Tooele 4-H Utah State University Extension have great activities planned for your children this summer! The camps are for youth in 1st grade and older and will be held at the pavilion at the Tooele Aquatic Park from 9:00 a.m. to 4:00 p.m. The cost for each camp is \$20.00. Space is limited—so register today!

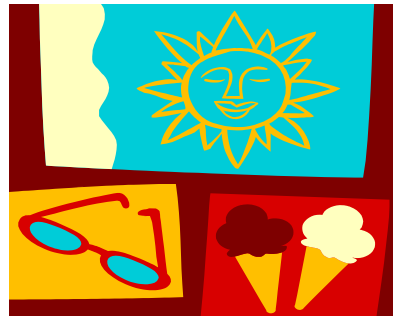
\*June 22 or 23—**Survivor: GPS Style (ages 3rd grade +)**—Use GPS Technology to hunt for clues in the Tooele

Valley.  
\*June 29 or 30—**Passports Around the World**—Learn about other countries and cultures.

\*July 6 or 7—**Proud to Be an American** - Come learn more about our country and make patriotic crafts.

\*July 13 or 14—**Owls, Potions and Spells**—Learn about potions, explore an owl pellet and much more.

\*July 20 or 21—**Olympic Field Day**—Join us for a field day of fun games



Summer Craze Day Camps—Weekly, Thursdays or Fridays

and learn about being healthy.

\*July 27 or 28—**Creative Expressions**—Learn about all the artful ways to “Express” yourself.

Registration forms and detailed descriptions can be found at: [www.tooelecity.org/citydepartments/youthservices.asp](http://www.tooelecity.org/citydepartments/youthservices.asp), or call the 4-H office, 843-2351 or Tooele City Parks and Rec Office, 843-2142, for more information.

The camps are sponsored by: Tooele City Parks and Recreation Department and Tooele 4-H Utah State University Extension Office. Have a fun and safe summer!

## VISIT THE CAFÉ AT THE OQUIRRH HILLS GOLF COURSE

The Café at the Oquirrh Hills Golf Course offers a delicious menu and the most beautiful view in Tooele! Come and enjoy a tee-lightful breakfast such as a mountain muffin, breakfast burrito, Oquirrh breakfast,

pancakes or a delicious cinnamon roll. Or stop by for lunch on the patio with hunger bustin’ sandwiches including hamburgers, turkey sandwiches, ham sandwiches, hot dogs, chicken sandwiches,

BLTs, corn dogs or a delicious Philly Swiss. They also have fish & chips, chicken fingers and burritos with rice & beans. They offer hole-in-one combos served with French fries and a drink.



Oquirrh Hills is proud to be an official LPGA Tour and The United States Golf Association GIRLS GOLF site. This program will consist of 10 events in the first year. Clinic times are Thursday mornings June 22nd through August 20th. Cost is \$30.00 and covers everything the student needs.

Oquirrh Hills Golf and Tooele City Parks & Recreation will be sponsoring **Youth Golf for girls and boys ages 8-17** this summer. Please join us for our Registration Kick Off on Thursday, June 22, 2006. Girls registration will begin at 8:00 a.m. and boys registration will begin at 10:00 a.m. The cost is \$30 for girls and \$40 for boys. For more

information or to sign up, please talk to the friendly staff at the Oquirrh Hills Golf Course (1255 East Vine Street—882-4220). Tooele City Parks & Recreation will also offer a limited number of scholarships. (Scholarship applications must be received by June 2, 2006). If you are interested in a scholarship please call Terra Sherwood at 843-2142.

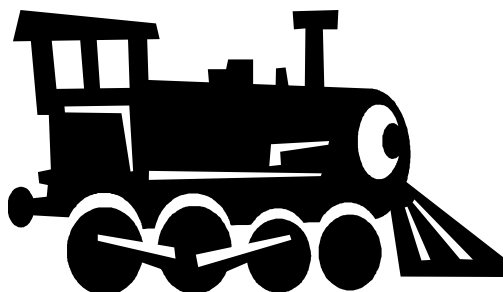


TOOELE CITY RAILROAD MUSEUM IS NOW OPEN!  
HOURS OF OPERATION: TUESDAY THROUGH SATURDAY  
1:00 P.M. TO 4:00 P.M.

TRAIN RIDES FOR CHILDREN ON  
SATURDAYS!

THE MUSEUM WILL BE OPEN UNTIL  
SEPTEMBER 4TH.

THE MUSEUM IS LOCATED ON BROADWAY AND VINE STREET.



## CITY HAPPENINGS

**We're on the web!**  
[www.tooelecit.org](http://www.tooelecit.org)

Tooele City Corporation

*Dedicated to Quality Living*

Tooele City  
90 N. Main St.  
Tooele, Utah 84074

Phone: 435-843-2100  
Fax: 435-843-2109



- \*June 5 **Swimming Lessons** begin at the Pratt Aquatic Center. Call 882-3247
- \*June 7 **City Council Meeting** 7:00 p.m.
- \*June 10 **Household Hazardous Waste Day.** Take your household hazardous waste to Clean Harbors Building 2150 N. 470 E., Tooele from 9 am–12 noon.
- \*June 14 **Planning Commission Meeting** 7:00 p.m.
- \*June 21 **City Council Meeting** 7:00 p.m.
- \*June 22 **Summer Craze Day Camps** begin. Call 843-2142.
- \*June 22 **Youth Golf Registration Kick Off**
- \*June 23-25 **Tooele Arts Festival.**
- \*June 24 **Tooele Master Gardner's Garden Tour** of homes in Tooele, Overlake, Stockton, Stansbury Park,

- and Grantsville. Tickets for \$5.00 may be picked up at Spears Farm at 394 W. 200 S., Tooele., or watch the Transcript Bulletin for other locations for tickets. You may call 882-0006 or 884-1936 for more information.
- \*June 28 **Planning Commission Meeting** 7:00 p.m.
- \***Tooele City 4H Garden Club** every Wednesday or Thursday from May through September. Call 843-2142
- \***Library Summer Reading Program** runs from May 30th through July 8th. You can sign up anytime during the program. Call 882-2182 or visit their new website at [tooelecit.org/citydepartments/library](http://tooelecit.org/citydepartments/library) to sign up today!
- \***Tooele Railroad Museum** open Tuesdays–Saturdays 1-4 pm.